



Gjöf

ISTEX.is • LOPIDESIGN.is



Gjöf

Sizes

	XS	S	M	L	XL	2XL	3XL
Chest:	86	93	100	106	113	120	126 cm
Length to underarm							
women's:	36	37	38	39	40	41	42 cm
men's:	39	40	41	42	43	44	45 cm
Sleeve length to underarm							
women's:	43	44	45	46	47	48	49 cm
men's:	47	48	49	50	51	52	53 cm

Materials

white

A 0051	white women's	7	8	8	9	10	11
A 0051	white men's	8	9	9	10	11	12
B 0056	light grey	2	2	2	2	3	3
C 0058	dark grey	2	2	2	2	3	3

Léttlopi - 50 g ball

black

A 0052	black women's	7	8	8	9	10	10	11
A 0052	black men's	8	9	9	10	11	11	12
B 1701	fjord blue	1	1	1	1	1	2	2
C 9421	celery green	1	1	1	1	1	2	2
D 9426	golden	1	1	1	1	1	1	1
E 9427	rust	1	1	1	1	1	1	1

Circular needles 4.5 mm, 40 and 80 cm

Circular needle 3.5 mm, 80 cm

Double pointed needles 4.5 and 3.5 mm

Darning needle

Gauge

18 sts and 24 rnds = 10 x 10 cm in St st using 4.5 mm needles.

Check gauge and adjust needle size if necessary.

Note

Body and sleeves are worked in the round from lower edge to underarms, then joined to work yoke in the round. Round begins at left side of body. On yoke, round begins on the left side of back at the joining of body and sleeve.

Body

Cast on 156, 168, 180, 192, 204, 216, 228 sts with color A using 3.5 mm circular needle. Join in the round and work rib: *k1, p1*, for 3 cm. Change to 4.5 mm circular needle and k pattern from **chart 1**. Cont with color A until body measures, women's: 36, 37, 38, 39, 40, 41, 42 cm, men's: 39, 40, 41, 42, 43, 44, 45 cm, from cast on edge. Do not work last 5, 6, 6, 7, 7, 8, 8 sts of rnd. Set aside and work sleeves.

Sleeves

Cast on 38, 40, 42, 44, 46, 48, 48 sts with color A using 3.5 mm double pointed needles. Join in the round and work rib: *k1, p1*, for 3 cm. Change to 4.5 mm needles. K pattern from **chart 1** and inc in first rnd 4, 2, 6, 4, 6, 4, 4 sts => 42, 42, 48, 48, 52, 52, 52 sts. Cont with color A and inc 1 st after first st and 1 st before last st of rnd, then in every 7th, 7th, 8th, 7th, 7th, 6th rnd, total 10, 11, 10, 11, 11, 12, 14 times, in sizes XS, M, XL and 3XL inc only 1 st in last inc rnd => 61, 64, 67, 70, 73, 76, 79 sts. Work until sleeve measures, women's: 43, 44, 45, 46, 47, 48, 49 cm, men's: 47, 48, 49, 50, 51, 52, 53 cm. Place 10, 11, 12, 13, 14, 15, 16 sts underarm on st holder => 51, 53, 55, 57, 59, 61, 63 sts. Work second sleeve.

Yoke

Join body and sleeves with color A using 4.5 mm circular needle. Place last 5, 6, 6, 7, 7, 8, 8 sts and first 5, 5, 6, 6, 7, 7, 8 sts of body on st holder for underarm. K first sleeve 51, 53, 55, 57, 59, 61, 63 sts. K 68, 73, 78, 83, 88, 93, 98 sts for front. Place next 10, 11, 12, 13, 14, 15, 16 sts of body on st holder for underarm. K second sleeve 51, 53, 55, 57, 59, 61, 63 sts. K 68, 73, 78, 83, 88, 93, 98 sts for back => 238, 252, 266, 280, 294, 308, 322 sts. Work pattern and decreases as indicated from **chart 2**. Change to



shorter circular needle when necessary. When chart is complete =>
68, 72, 76, 80, 84, 88, 92 sts.

Neckband

Change to 3.5 mm needle. K 1 rnd and decrease evenly spaced 0,
0, 2, 6, 8, 10, 12 sts => 68, 72, 74, 76, 78, 80 sts. work rib:
k1, p1, for 7 cm. Bind off loosely.

Weave in loose ends.

Optional: Fold neckband in half to inside and slip stitch in place.
Rinse sweater by hand in lukewarm water and lay flat to dry in
right measurements.

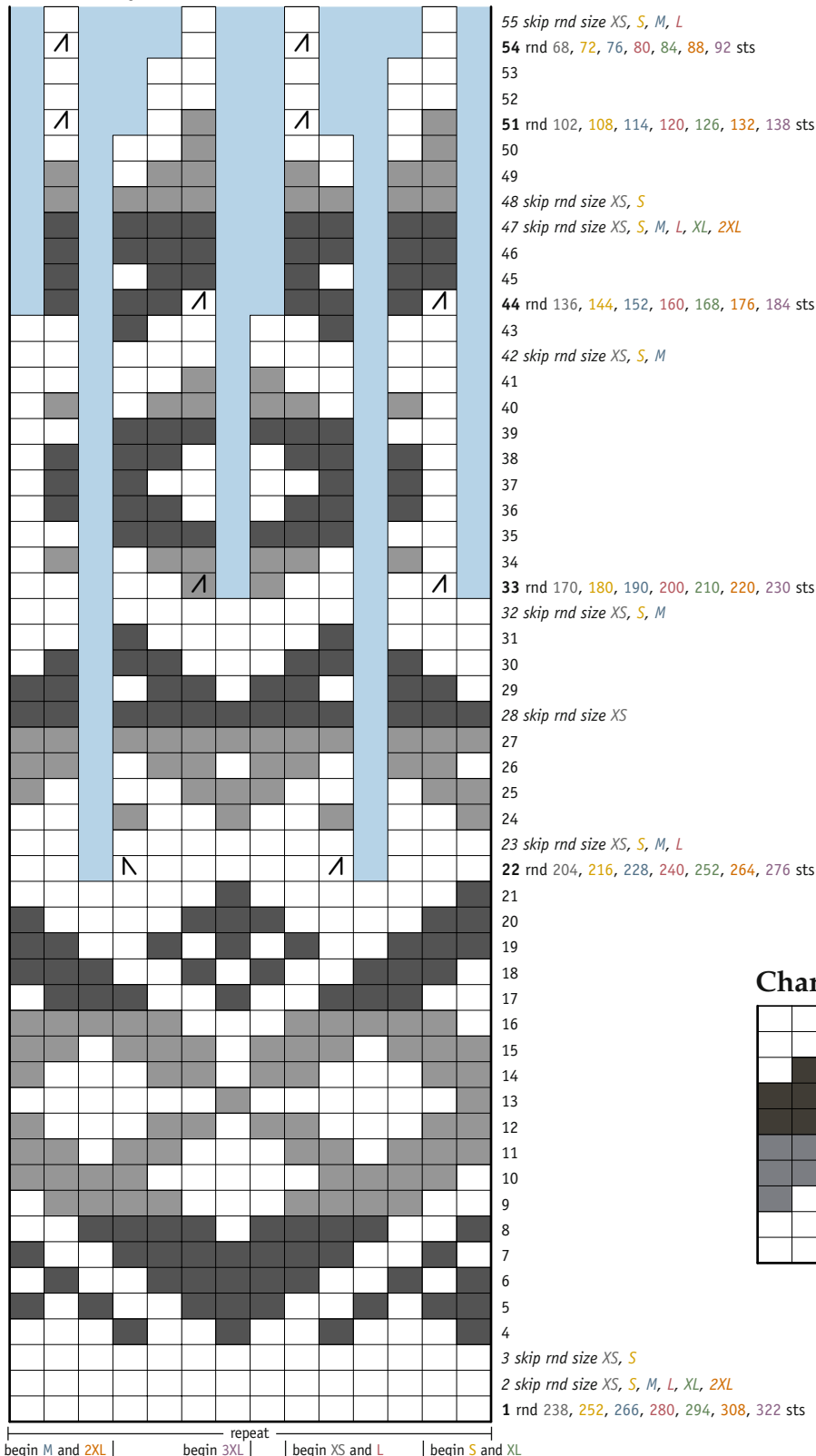
Design: **Védís Jónsdóttir**

for Heimilisiðnaðarfélag Íslands - Nordic Craft Week

Finishing

Place sts underarm on needles and graft together with darning
needle.

Chart 2 - yoke



Abbreviations

st(s) = stitch(es)
rnd = round(s)
k = knit
p = purl
inc = increase
cont = continue
_ = repeat instructions between asterisks

Key - white

□ = A 0051
■ = B 0056
■ = C 0058
A = k 2 together right slanting
N = k 2 together left slanting
□ = no stitch

Chart 1 - body and sleeves

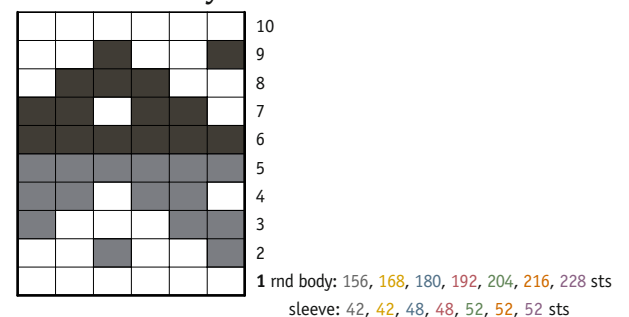
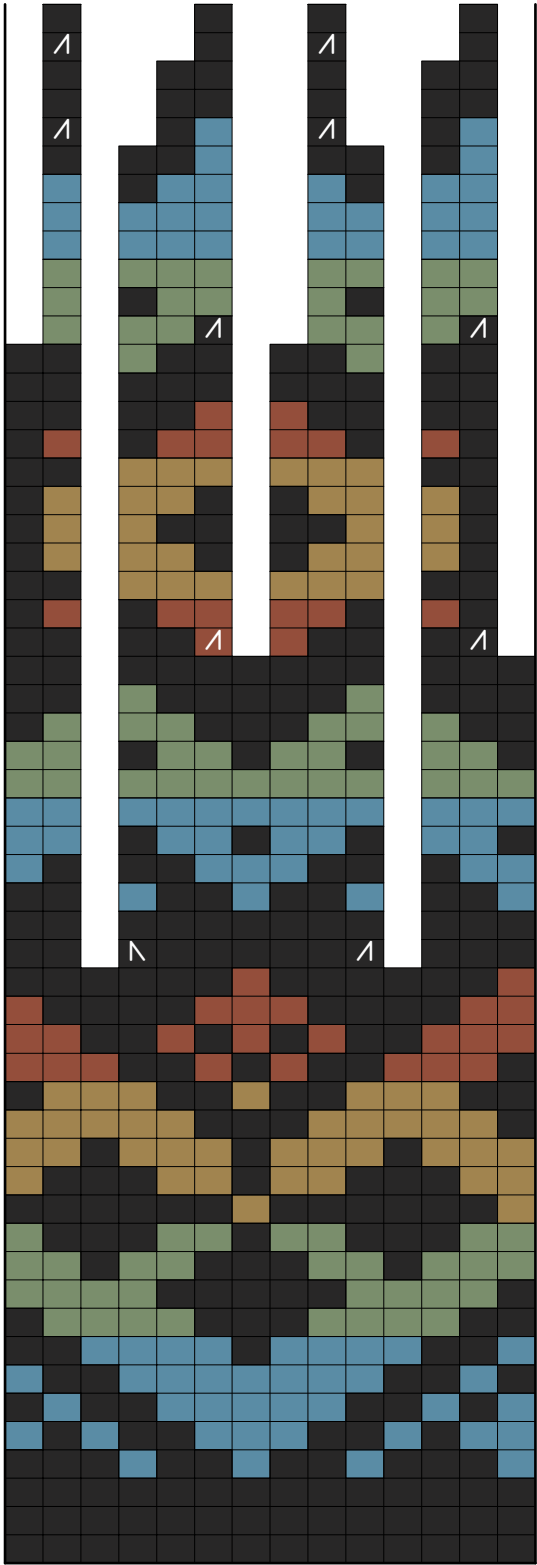


Chart 2 - yoke



begin M and 2XL | begin 3XL | repeat | begin XS and L | begin S and XL

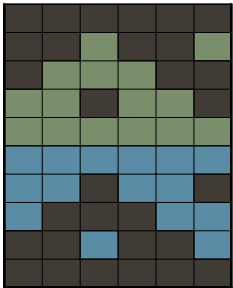
55 skip rnd size XS, S, M, L
54 rnd 68, 72, 76, 80, 84, 88, 92 sts
53
52
51 rnd 102, 108, 114, 120, 126, 132, 138 sts
50
49
48 skip rnd size XS, S
47 skip rnd size XS, S, M, L, XL, 2XL
46
45
44 rnd 136, 144, 152, 160, 168, 176, 184 sts
43
42 skip rnd size XS, S, M
41
40
39
38
37
36
35
34
33 rnd 170, 180, 190, 200, 210, 220, 230 sts
32 skip rnd size XS, S, M
31
30
29
28 skip rnd size XS
27
26
25
24
23 skip rnd size XS, S, M, L
22 rnd 204, 216, 228, 240, 252, 264, 276 sts
21
20
19
18
17
16
15
14
13
12
11
10
9
8
7
6
5
4
3 skip rnd size XS, S
2 skip rnd size XS, S, M, L, XL, 2XL
1 rnd 238, 252, 266, 280, 294, 308, 322 sts



Key - black

- = A 0052
- = B 1701
- = C 9421
- = D 9426
- = E 9427
- = k 2 together right slanting
- = k 2 together left slanting
- = no stitch

Chart 1 - body and sleeves



10
9
8
7
6
5
4
3
2

1 rnd body: 156, 168, 180, 192, 204, 216, 228 sts
sleeve: 42, 48, 48, 52, 52, 52 sts

